

## SUBSTANCE SAMENESS INFORMATION SHEET

Version: 27 November 2012

REACH name : 3(or 4)-methylbenzene-1,2-diamine

Common name : o-TDA mixture

REACH substance type : Multiconst. Subst.

EC No. (EINECS / NLP) : 248-145-0

CAS No. : 26966-75-6

CAS Name :

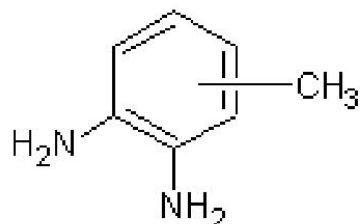
IUPAC Name : 1,2-Benzenediamine, 4-methyl (3,4-TDA)  
1,2-Benzenediamine, 3-methyl (2,3-TDA)  
N.A. (commercial TDA mixture (2,3/3,4-TDA (40/60)))

Other (chemical) names : Toluene-ar,ar-diamine  
Toluenediamine  
1,2-Benzenediamine, 3(or 4)-methyl-  
1,2-Benzenediamine, ar-methyl-  
Methyl-1,2-benzenediamine  
Methyl-o-phenylenediamine  
o-Tolylenediamine

Other identity codes :

Molecular formula : C<sub>7</sub> H<sub>10</sub> N<sub>2</sub>

Structural formula :



Molecular weight : 122 g/mol

### TYPICAL COMPOSITION

Constituents : typical 68 (55-80)w% 3,4-Toluenediamine  
typical 32 (20-45)w% 2,3-Toluenediamine

Impurities : max 1.7 w% 2,5-Toluenediamine  
max 1.8 w% Low boiling impurities  
max 2.5 w% High boiling impurities  
max 0.5 w% Water  
max 0.1 w% Sulfated Ash  
+ other impurities

### OTHER INFORMATION

CMR cat 1 or 2 : 2

R50/53 : N

Read across subst. :

	EC No.	CAS No.
4-methyl-o-phenylenediamine	207-826-2	496-72-0
toluene-2,3-diamine	220-248-5	2687-25-4
Reaction mass of 4-methyl-o-phenylenediamine and toluene-2,3-diamine		
4-methyl-m-phenylenediamine	202-453-1	95-80-7
Diaminotoluene	246-910-3	25376-45-8